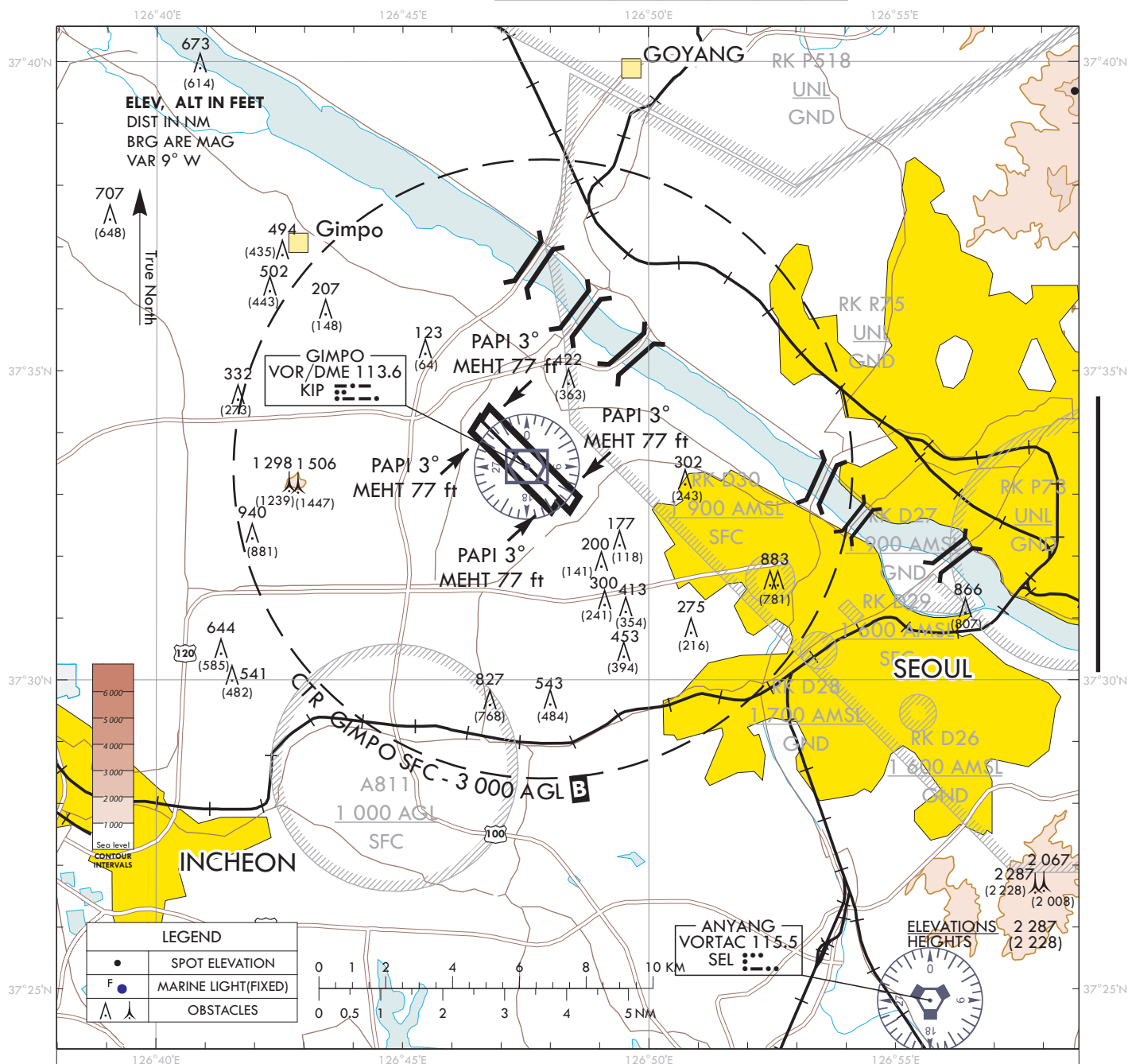


**VISUAL
APPROACH
CHART - ICAO**

AD ELEV : 59 FT
HEIGHTS RELATED
TO AD ELEV

SEOUL	APP	119.75	121.35	119.1	124.7	305.7
	DEP	119.05	125.15	124.8	123.8	363.8
GIMPO	TWR	118.1	118.05	240.9		

SEOUL/Gimpo INTL



ATS airspace Classifications

1. Class B : Radius of Gimpo airports ARP(373325N 1264751E)

o Vertical limits

- Within 5 NM including areas which are extended northbound from 37°36'46"N 126°39'26"E - 37°39'44"N 126°43'10"E - 37°38'03"N 126°45'18"E - 37°34'58"N 126°41'42"E, and southbound from 37°28'40"N 126°49'38"E - 37°30'36"N 126°52'52"E - 37°29'07"N 126°54'44"E - 37°26'52"N 126°51'53"E - 37°36'46"N 126°39'26"E (SFC - 10 000 ft AMSL)
- Within 5 NM - 10 NM(1 000 ft AGL - 10 000 ft AMSL)
- Within 10 NM - 20 NM(5 000 ft AGL - 10 000 ft AMSL)

□ Class D : Airspace from above 10 000 ft AMSL to FL 200 within Seoul TMA, excluding Class B

o Speed limits : 250 kt IAS or less below 10 000 ft AMSL

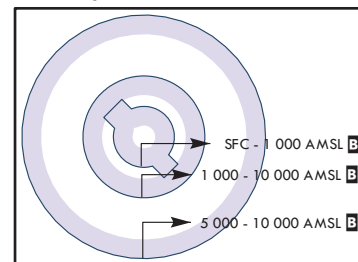
2. Class E :

o Vertical limits

- Controlled Airspace from 1 000 ft above the surface or the sea level to FL 600 and less except Class A, B, C and D

o Speed limits : 250 kt IAS or less below 10 000 ft AMSL

<Airspace Classification>



Change : Information of RK P73 and class B airspace.

OFFICE OF CIVIL AVIATION

AIRAC AIP AMDT 13/22
Effective : 1600UTC 25 JAN 2023